

B-1085 SR ZIP SCREEN

Windproof and insect repellent screen with motor



Features and benefits

- screen with ZIP system, wind-resistant up to 6 Beaufort and insect proof in downward position
- width: minimum 0,6m - maximum 3,6m
- coupled width: minimum 1,2m - maximum 7,2m
- height: maximum 1,8m
- classic, half-rounded headbox (8,5cm x 8,5cm)
- housing, guiding rails and bottom bar in aluminium
- wind resistance according to European standard EN13561: technical class 3 (6 Beaufort)
- during wind speed over 80 km/h guarantee only covers completely rolled up screens
- positive and measurable effect on energy performance of buildings (EPBD)
- roller tube with anti-wrinkle profile in soft PVC avoids horizontal markings on the fabric

Electrical operation and sensors

- standard with Somfy LT motor and wall switch
- option (only available with limited dimensions): manual gear or cardan operation from the inside
- option: motor controlled by fixed wired/wireless switch and Telis RTS or io-homecontrol transmitter
- option: Somfy RTS or io wind- and sun sensors Eolis (wind), Soliris (wind & sun), Sunis (sun)

Fabric

- available in over 150 fabrics: Screen (Sergé 600), Soltis 86 or Soltis 92
- available in 6 blackout screens Soltis B92
- option: transparent PVC window

Applications

- wind tight and motorized outdoor sun protection for glass surfaces up to 3,6m wide and 1,8m high
- buildings in which the thermal conditions for working and living can be improved in a durable way, without blocking the outside view
- residential, commercial and public buildings

Standard colours

- available in 5 standard colours:



BRUSTOR
WHITE



CREAM
RAL 9001



ANODISED
20 micron



BROWN
RAL 8019



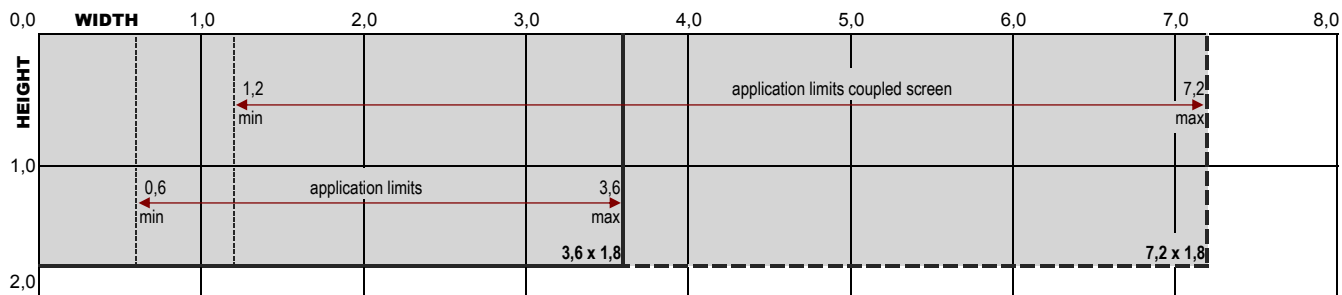
ANTHRACITE
GREY 7016

- option: over 200 other RAL colours

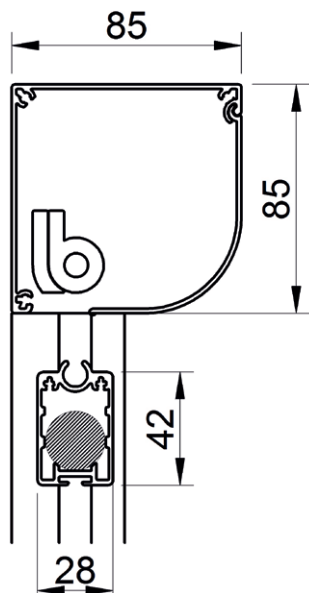
B-1085 SR ZIP SCREEN

Windproof and insect repellent screen with motor

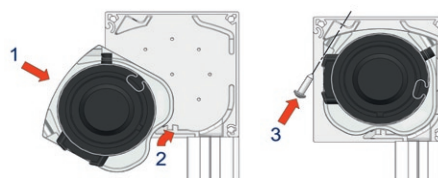
B-1085 ZIP: max. dimensions and application limits



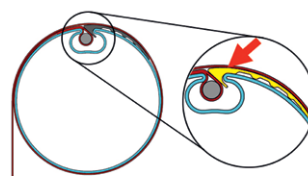
maximum width: 3,6m (coupled version: 7,2m wide) - maximum height: 1,8m



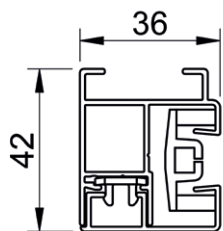
headbox 85mm x 85mm
lead rail 28mm D x 42mm H



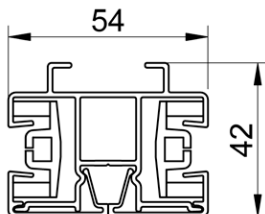
roller tube and motor can easily be removed



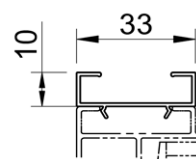
roller tube with anti-wrinkle profile
in soft PVC



ZIP side rail
42mm D x 36mm W



ZIP coupling rail
42mm D x 36mm W



option: spacing profile
10mm D x 33mm W